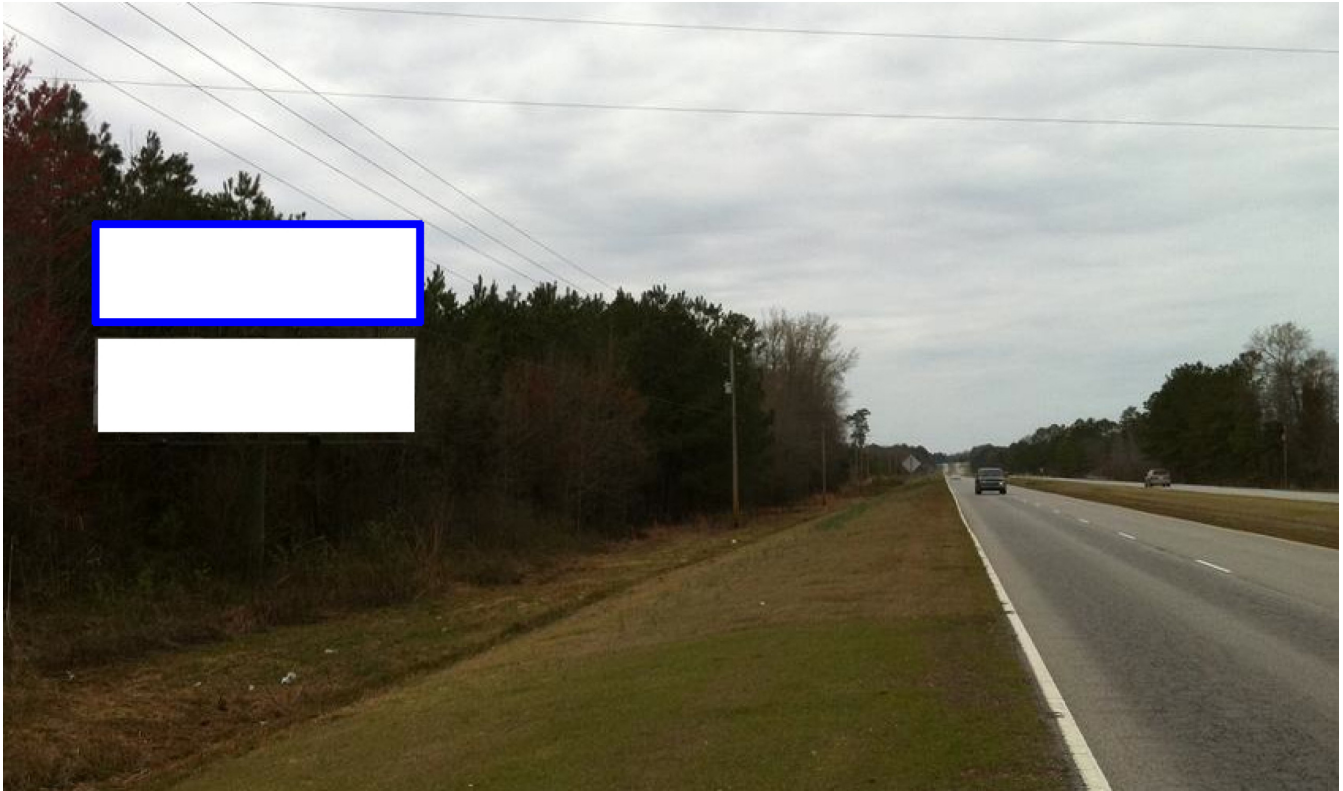


SR 9, W/O Hickory Grove Rd, SS, WB LHR Top, E/F



By Grace Temple Fellowship Church

On SR-9 between Wallace and Bennettsville, this is the Top billboard of a double-stacked structure reaching westbound/northbound traffic towards Wallace and Cheraw. This is a left-hand read board with good visibility to the road and reaching locals and commuters

Illuminated Bulletin Location

City: Cheraw, SC 29596

Facing: East (CR)

Latitude/Longitude: 34.70366/-79.80585

Bulletin Face Size: 10'0 x 33'0

Weekly Circulation 18+: 85,085

