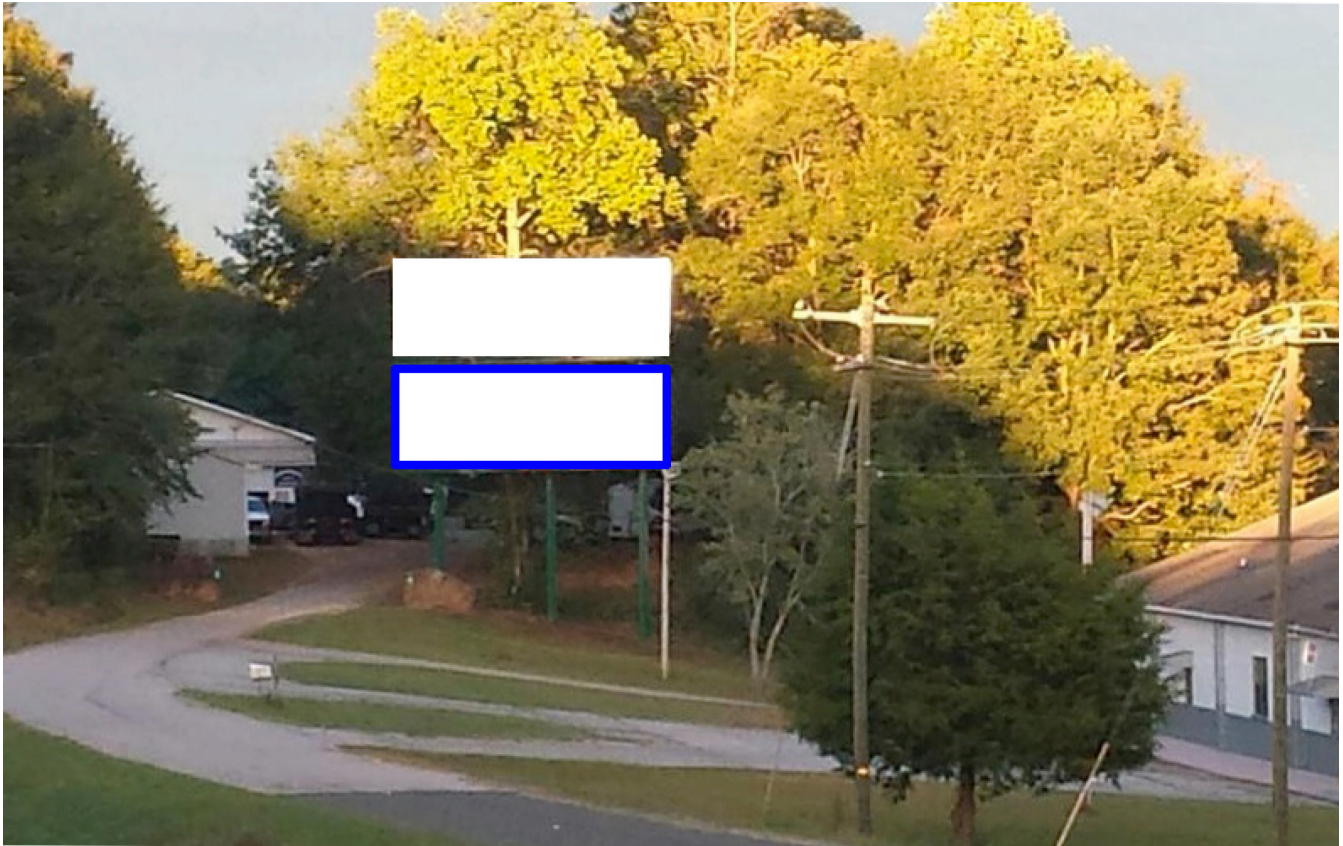


US 123 Calhoun Mem Hwy, 1/2 mi N/O Isaqueena Trail, ES, NB RHR, S/F



Between Lowe's and Walmart

Just east of Clemson on US-123/Calhoun Memorial Hwy, this is the Bottom billboard of a double-stacked structure and a right-hand read reaching northbound traffic heading towards Easley and further to Greenville SC. It has very good visibility to the road.

Illuminated Bulletin Location

City: Clemson, SC 29630

Facing: South (RR)

Latitude/Longitude: 34.69552/-82.77425

Bulletin Face Size: 10'0 x 33'0

Weekly Circulation 18+: 99,365

